

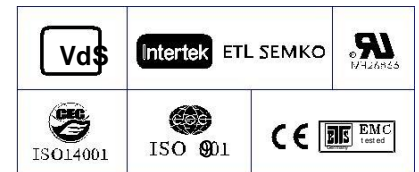
PS6-1.2 (6V1.2AH)

Specification

Nominal Voltage	6V
Nominal Capacity(20HR)	1.2AH
Dimension	Length 97±1mm (3.82 inches)
	Width 24±1mm (0.94 inches)
	Container Height 51.5±1mm (2.03 inches)
	Total Height (with Terminal) 57.5±1mm (2.26 inches)
Approx Weight	Approx 0.28 kg (0.62lbs)
Terminal	T1
Container Material	ABS
Rated Capacity	1.20 AH/0.060A (20hr, 1.80V/cell, 25°C/77°F)
	1.12 AH/0.112A (10hr, 1.80V/cell, 25°C/77°F)
	1.02 AH/0.204A (5hr, 1.75V/cell, 25°C/77°F)
	0.918 AH/0.306A (3hr, 1.75V/cell, 25°C/77°F)
	0.754 AH/0.754A (1hr, 1.60V/cell, 25°C/77°F)
Max. Discharge Current	18A (5s)
Internal Resistance	Approx 65mΩ
Operating Temp. Range	Discharge : -15~50° C (5~122°F)
	Charge : 0~40° C (32~104°F)
	Storage : -15~40° C (5~104°F)
Nominal Operating Temp. Range	25±3°C (77±5°F)
Cycle Use	Initial Charging Current less than 0.36A. Voltage 7.2V~7.5V at 25° C(77° F)Temp. Coefficient -15mV/°C
	No limit on Initial Charging Current Voltage 6.75V~6.9V at 25° C(77° F)Temp. Coefficient -10mV/°C
Standby Use	40° C (104° F) 103% 25° C (77° F) 100% 0° C (32° F) 86%
Capacity affected by Temperature	Power Star battery may be stored for up to 6 months at 25° C(77°F) and then a freshening charge is required. For higher temperatures the time interval will be shorter.
Self Discharge	



- ◆ All purpose
- ◆ Uninterruptable Power Supply (UPS)
- ◆ Electric Power System (EPS)
- ◆ Emergency backup power supply
- ◆ Emergency light
- ◆ Railway signal
- ◆ Aircraft signal
- ◆ Alarm and security system Electronic apparatus and equipment
- ◆ Communication power supply
- ◆ DC power supply
- ◆ Auto control system



Constant Current Discharge (Amperes) at 25 °C (77°F)

F.V/Time	5min	10min	15min	20min	30min	45min	1h	2h	3h	4h	5h	6h	8h	10h	20h
1.85V/cell	2.29	1.75	1.45	1.26	0.97	0.716	0.603	0.357	0.279	0.227	0.185	0.161	0.130	0.108	0.0594
1.80V/cell	3.07	2.24	1.76	1.49	1.15	0.833	0.676	0.390	0.300	0.242	0.199	0.172	0.137	0.112	0.0600
1.75V/cell	3.46	2.46	1.92	1.60	1.19	0.864	0.707	0.404	0.306	0.248	0.204	0.177	0.140	0.115	0.0606
1.70V/cell	3.81	2.69	2.05	1.68	1.24	0.899	0.729	0.414	0.315	0.254	0.209	0.181	0.142	0.117	0.0617
1.65V/cell	4.20	2.90	2.18	1.78	1.31	0.921	0.746	0.420	0.328	0.263	0.215	0.185	0.144	0.119	0.0625
1.60V/cell	4.63	3.15	2.33	1.90	1.38	0.960	0.754	0.438	0.338	0.271	0.222	0.189	0.145	0.121	0.0629

Constant Power Discharge (Watts) at 25 °C (77°F)

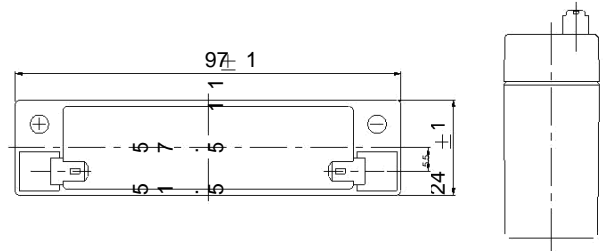
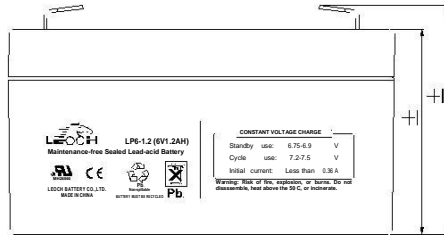
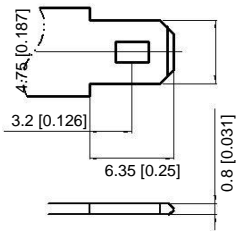
F.V/Time	5min	10min	15min	20min	30min	45min	1h	2h	3h	4h	5h	6h	8h	10h	20h
1.85V/cell	4.18	3.24	2.71	2.37	1.85	1.38	1.16	0.693	0.544	0.444	0.363	0.316	0.256	0.214	0.118
1.80V/cell	5.55	4.09	3.23	2.76	2.15	1.59	1.30	0.751	0.582	0.471	0.388	0.337	0.271	0.221	0.119
1.75V/cell	6.12	4.43	3.49	2.94	2.22	1.63	1.35	0.776	0.591	0.480	0.397	0.346	0.275	0.226	0.120
1.70V/cell	6.56	4.71	3.67	3.07	2.29	1.69	1.39	0.794	0.606	0.492	0.406	0.352	0.278	0.231	0.122
1.65V/cell	7.13	5.04	3.87	3.23	2.40	1.72	1.41	0.801	0.629	0.507	0.416	0.359	0.282	0.235	0.123
1.60V/cell	7.68	5.35	4.08	3.41	2.52	1.78	1.42	0.831	0.645	0.521	0.428	0.365	0.284	0.237	0.124



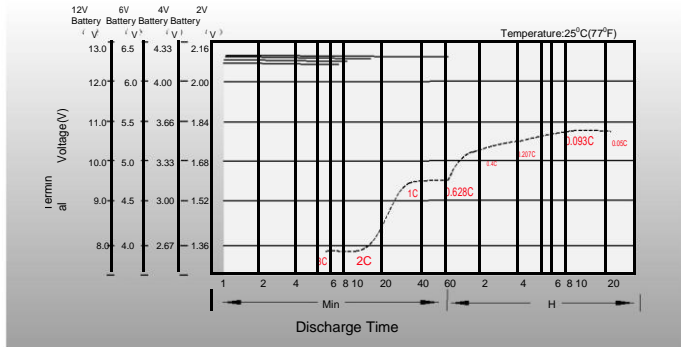
Dimensions

T1 Terminal

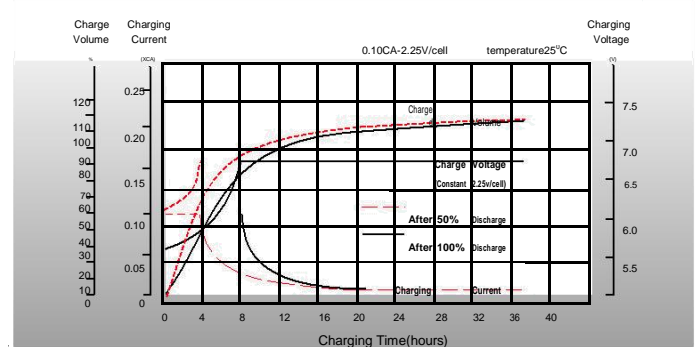
Unit: mm [inches]



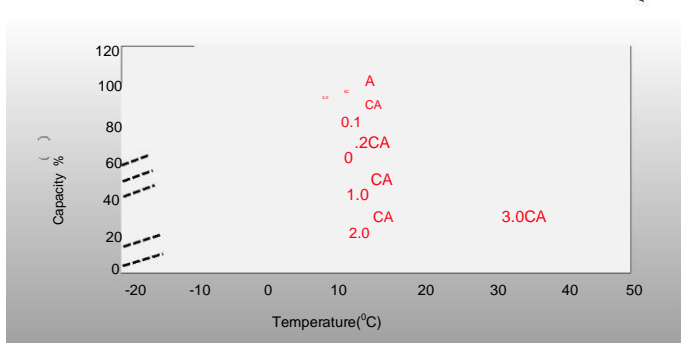
Discharge Characteristics



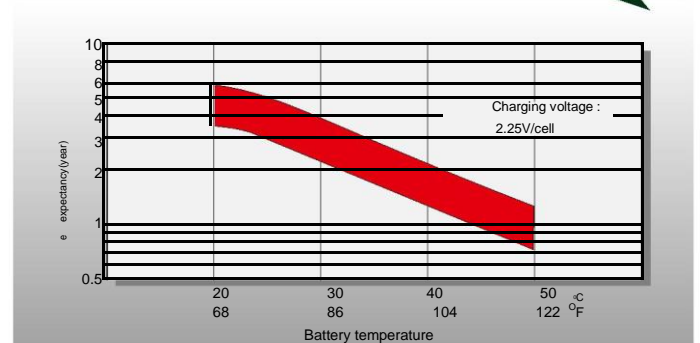
Float Charging Characteristics



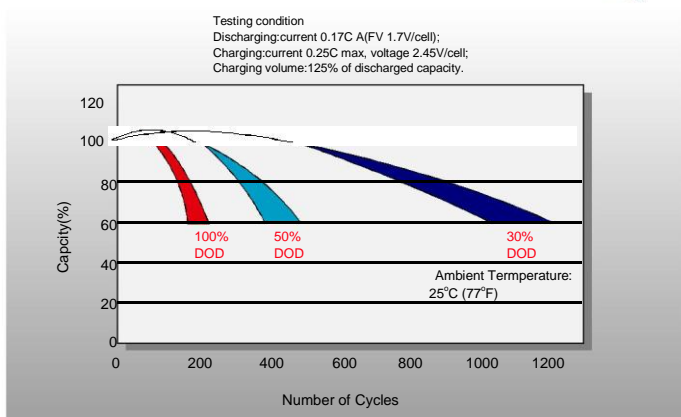
Temperature Effects in Relation to Battery Capacity



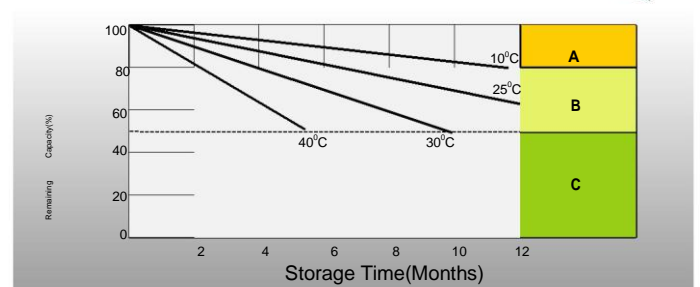
Effect of Temperature on Long Term Float Life



Cycle Life in Relation to Depth of Discharge



Self Discharge Characteristics



- A** No supplementary charge required (Carry out supplementary charge before use if 100% capacity is required.) Supplementary charge required before use. Optional charging way as below: 1. Charged for above 3 days at limited current 0.25CA and constant voltage 2.25V/cell.
- B** 2. Charged for above 20 hours at limited current 0.25CA and constant voltage 2.45V/cell. 3. Charged for 8-10 hours at limited current 0.05CA.
- C** Supplementary charge may often fail to recover the capacity. The battery should never be left standing till this is reached.

Sales Office

PowerStar sales office:

Add: BatteryJack Inc
 772 Twin Rail Dr, Minooka, IL 60447
 Tel: 888-30-POWER
 Fax: 815-467-7420
 E-mail: sales@batteryjack.com
 Http://www.powerstarsla.com